

stoplamp switches



L

HYDRAULIC	L1
MECHANICAL	L2

stoplamp switches

L1 HYDRAULIC

SPST, Normally Off. Contacts close at rising pressure. Operate at 60 to 120 psi (414 to 827 kPa). Thread is NPTF dryseal thread for use without a sealant.

8626 ★

Two 6-32 screw terminals. 1/8" -27 thread mounting stem, 11/32" (8.73mm) long.

Replaces: Delco 476S, 4760, FWD 4760, 4765, GMC 403936, 476592, 1316600, Ford 100810B, 510C, Mack 5CG-114, 11MR-1152, Motorcraft SW-311, Wagner FC-1201, FC5106, White 58012-F, 443106, 1319522.



8638*

Two button head terminals accept standard female terminals. Will mate with Packard connector 2962679 or equivalent. 1/8" -27 thread mounting stem, 11/32" (8.73mm) long.

Replaces: AMC 991216, Delco 4769, GMC 1171472, 1363959, Jeep 931126, International 257854C91, 258298C91, Motorcraft SWG-314, Wagner FC-23808.



8628

Two female bullet terminals. 1/8" -27 thread mounting stem, 11/32" (8.73mm) long.

Replaces: AMC 99469, Chrysler 1450341, Delco 4765, Ford 91A-13480, Jeep 647801, Motorcraft SWC-312, Wagner FC-5550, FC-6370.



8649*

M10x1 taper pipe thread. Two 6-32 screw terminals.

Replaces: Bosch SHL02/1, VW 113945515.



8629 ★

Two male bullet terminals. 1/8" -27 thread mounting stem, 11/32" (8.73mm) long.

Replaces: AMC 300356, 3145198, 3192194, 4488306, Delco 4766, 4733, D850, Ford B8A, B9SF, C1AZ-13480A, GMC 1320938, 1328118, 1997725, Jeep 70034, 201466, 647801, Motorcraft SW-24, Wagner FC-6780, FC-7715, 179-318, AC5812W.



give warning

Looking for a pilot light or audible warning to connect to your switch? See Section N1: Buzzers & Alarms, and Section N2: Pilot Lights.

MECHANICAL L2

L stoplamp switches

L2 MECHANICAL

SPST Normally On

Spring return to On.

8645

1/2" -20 thread mounting stem, 3/8" long.
Plunger 11/32" long.



8715 ★

Moisture-resistant plastic body and plunger.
1/2" diameter mounting stem, 1 5/32" long.

Replaces: AMC 3189147, 3194569, 4488295, 5352620, 9770419, Chrysler 2809033, Delco D864, D866, D868, D873, U850, U851, U852, D885, Ford C8ZZ-13480A, C7TZ, D2TZ-13480B, GMC 536289, 1261219, 1362835, 959, 1993509, 1998192, 196, 667, 3631535, 3889606, 3889607, 3952426, 9772188, 9776994, 14074323, 25524844, International 312739C91, 358560C91, Motorcraft SWG-535, SW-691A, SW-1512, VW 175957656A, Wagner FC-32200, FC-32085, FC-66780.



8717*

Moisture-resistant plastic body and plunger. 11/32" diameter mounting hole.

Replaces: Delco D879, GMC 1993595, Motorcraft SW-523.



8713*

Moisture-resistant plastic body and plunger. 1/4"-28 mounting stem.

Replaces: Chrysler 2258864, 2496985, 249712, 2580998.



8486 lever actuated (R)

When viewed from the terminals, the lever projects to the right (see also 8487).
Lever is 2 7/8" overall length.
Two tapped 10-32 mounting holes, 5/8" on centers.

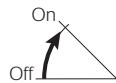
Replaces: Delco D851, D853, D855, GMC 1997901, 1997915, 1997922, Motorcraft SWG-317, Wagner FC-21630.



8487 lever actuated (L)

When viewed from the terminals, the lever projects to the left. Otherwise, the switch is identical to 8486.

Replaces: Delco D852, D854, DR-2401, GMC 1997913, 1997921, Motorcraft SWG-318, 319, Wagner FC-21632.



SPST Normally Off

Spring return to Off.

8723*

Contacts close at 10 to 14.5 lbs pressure.
9/16" diameter mounting holes.

Replaces: Ford C5AZ, C7ZZ, C8ZZ, C9ZZ-13480B, C8ZZ-13480C, D5UZ-13480A. Motorcraft SW-752, 864, 1255.

8722*

Contacts close at 24 to 34 lbs pressure.
9/16" diameter mounting holes.

Replaces: Delco 1972544, Ford C5AZ, C7AZ, C7ZZ, C9ZZ-13480A, Motorcraft SW-863, 864.



8724*

Contacts close at 24 to 34 lbs pressure.
.562" diameter mounting holes. Two pole connector has one male and one female bullet connector.

Replaces: Ford C5CZ, C7TZ, C7UZ-13480A, Motorcraft SW-665.



8732*

Contacts close at 20 to 29 lbs pressure.
.562" diameter mounting holes. Two pole connector has one male and one female bullet connector.

Replaces: Ford C9AZ-13480C, D2AZ-13480A, Motorcraft SW-860.



8743*

Contacts close at 14.5 to 20.5 lbs pressure.
9/16" diameter mounting holes.

Replaces: Delco F857, Ford E04Y-13480A, Motorcraft SWX-1303.



8757*

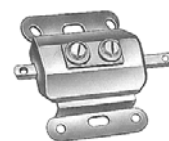
Contacts close at 5 to 8 lbs pressure.
9/16" diameter mounting holes.

Replaces: Ford E3FZ, E6FZ-13480A, E1FZ-13480A, B, Motorcraft SW-1639, SW-1640, SW-1640-A.



8466 for push or pull operation

Push or pull to On, spring return to Off.
11/32" long plunger with 9/64" diameter hole for attachment of cable or actuating device. Four 13/64" diameter mounting holes.
1 1/2"L x 2"W center to center.



★ Rapid ship item. BP Available in retail clamshell pack. ★ Minimum order quantity may apply.



Cole Hersee Co. 20 Old Colony Ave, Boston, MA 02127-2467

106

T 617.268.2100 F 617.268.9490 www.colehersee.com